

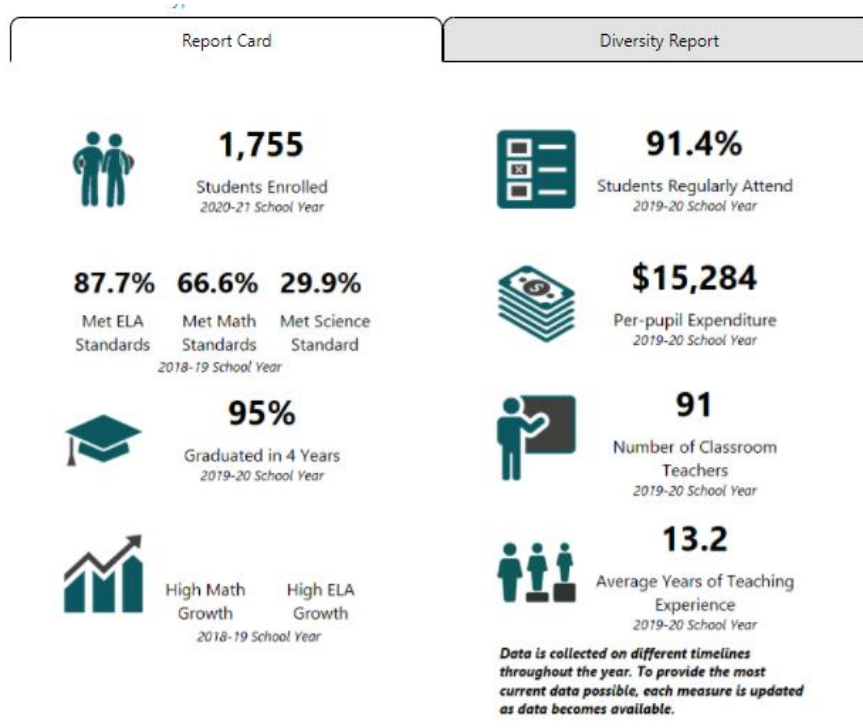
# PLANNING WITH SCHOOL DATA WORKSHEET

This worksheet is designed to help you think through your *operational* (“How might my program act on this data now?”) and *evaluative* (“What could this be telling me about my program for the future?”) uses for school data using three common examples:

1. Summary school performance data (publicly available) from the Washington State Office of the Superintendent of Public Instruction (OSPI).
2. Sample attendance performance and attendance data for a group of students; sometimes districts will make this kind of data available to partners with parental consent and a data-sharing agreement.

## EXAMPLE 1: SUMMARY SCHOOL PERFORMANCE DATA (OVERALL)

The following comes from a School Report Card produced by Washington State Office of the Superintendent of Public Instruction (OSPI) (see <https://washingtonstatereportcard.ospi.k12.wa.us/ReportCard/> for full reports):



What (if any) action might your program take based on this data?

If your program were working with students at this school, how (if at all) could this information inform your work in the future?

What could make this data more useful (What else do you want to know?)?

## EXAMPLE 2: STUDENT ATTENDANCE AND PERFORMANCE DATA

StudentID	CurrentEnrollmentSchoolName	Sex	State Test Reading Level	State Test Math Level	Current Grade	Days Absent	Days Total	Attendance Trend	Tardy Count
6020758	George Washington High School	F	L3	L2	9th	16.83	49	Steady	3
6025779	John Adams High School	F	L2	L1	9th	13.83	49	Steady	18
7653826	Thomas Jefferson High School	F	L3	L4	9th	7.5	49	Steady	40
7851193	Thomas Jefferson High School	F	L2	L0	9th	7.16	49	Steady	2
7709122	James Madison	M	L4	L4	9th	6.41	49	Worsening	8
7351102	Thomas Jefferson High School	M			9th	5.66	49	Worsening	1
6272705	Thomas Jefferson High School	F	L0	L0	9th	4.66	49	Worsening	11
7686362	George Washington High School	F	L4	L4	9th	4.25	49	Improving	14
6783703	Thomas Jefferson High School	M	L3	L2	9th	3.16	49	Steady	4
3848412	James Monroe High School	M			9th	3	49	Steady	0
3932749	John Quincy Adams High School	M	L0	L0	9th	2.83	49	Steady	11
7294174	Andrew Jackson High School	F	L2	L3	9th	2.8	49	Steady	7
7030176	James Madison	F	L4	L4	9th	2.75	49	Improving	6
7384605	Martin Van Buren High School	F	L3	L1	9th	2.33	49	Worsening	6
7559315	George Washington High School	F	L2	L3	9th	2.33	49	Worsening	2

What (if any) action might your program take based on this data?

If your program were working with these students, how (if at all) could this information inform your work in the future?

What could make this data more useful (What else do you want to know?)?